
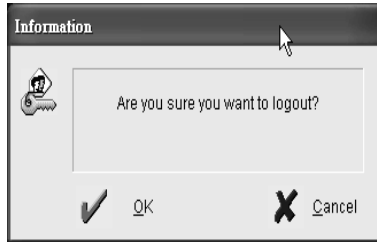
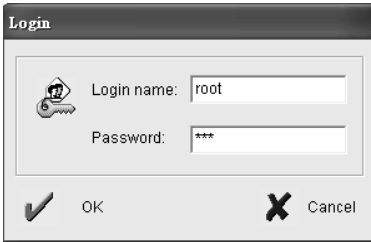


Web Surveillance Server End User Manual

Please click  in the top right of your screen to login/out the DVR system.


The default settings are as follows:



Login name: **YOUR USER NAME**

Password: **YOUR PASSWORD**

Enter these, and then click “OK” to login. To logout, click the same icon and confirm.


- Click  to play back video clips. A new window will appear for you to select video clips

based on date recorded. Click “OK” to confirm selection. The video clip will play automatically with camera number, site location, recorded date, video file size, etc. For more details, please consult


Chapter 7-10



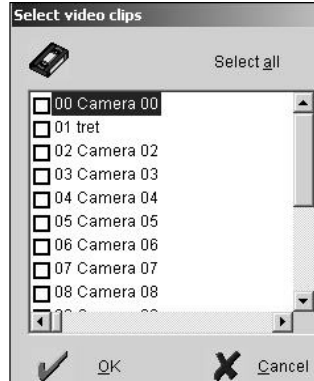
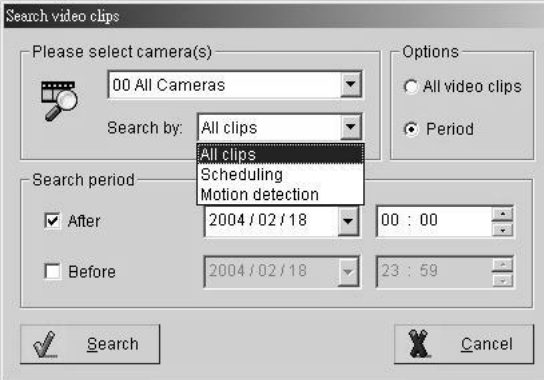
7-10. Playing Back and Smart Search Video Files

Clicking  on the tool bar, will allow you to search your video clips.

- **Follow the steps below to play back videos:**

Step 1. Click  in the middle of right side to **search** for videos in database.

And you will see below window.




Step 2. Select the camera. To play multiple videos, select **“00 Camera 00”**.

Step 3. Decide which recording way will be searched by **“Options”**.

Step 4. Select the recording period, then click **search** to find the clips among the selected time.

- **Follow the steps below to remove a video from your archive:**

Step 1. Click  on right screen to search for videos.

Step 2. Decide which recording way for deletion by **“Options”**.

Step 3. Select the videos that need to be removed.

Step 4. Select camera and time of the archived video.

Step 5. Click **“Delete”**.

- **Play back Archived Videos**

At the playback screen, you can play back videos.

Camera number, camera location, time recorded, storage space, etc. will be displayed on the screen.

Double click on any video screen to enlarge a single video. Move the mouse to any video screen to show video tool bar and information of single video (see below picture).

Double click again to restore the previous viewing screen.



● **Video tool bar on playback screen**



Play – Click this icon to play back videos.



Pause – Click this icon once to pause videos.



Stop – Click this icon to stop videos.



Previous frame – Jump to previous frame.



Next frame – Jump to next frame.



First frame – Jump to the first frame of video clip.



Last frame – Jump to the last frame of video clip.



Repeat playback – Click this icon once have the videos play back on repeat. Click once more to cancel repeat.



Zoom in – Click this icon to zoom in.



Zoom out – Click this icon to zoom out.



Original – Click this icon to go back original video size.



Video copy – This button will copy current video clip to a specific location for archiving. User could enable/disable “**Copy audio data**”.



Delete video – Erase video play back file.



Navigation bar – This displays the current position of the video clip and allows users to move to different

points within the clip. Left moves backward, right moves forward.



Snapshot – Click this icon to capture the video screen as a BMP or JPEG file.



Repeat – Click this icon once have the videos of all camera play back on repeat. Click once more to cancel repeat.



Resize – Click this icon to resize clip.



Next video – Jumps to the next video.



Previous video – Jumps to the previous video.




Decrease frame rate – Decreases the frame rate.






Normal frame rate – Adjusts frame rate back to normal.




Increase frame rate – Increases the frame rate.


Screen size can be adjusted by selecting different multiple displays. Click  to view full screen; click

 to view videos in 352 x 288; click  to view videos in 176 x 144; click  to view videos in 160 x 120.



Quick search video: Click  to list the information of all video clips (Refer to Fig A-1), and you can quickly search and assign a video clip to playback.

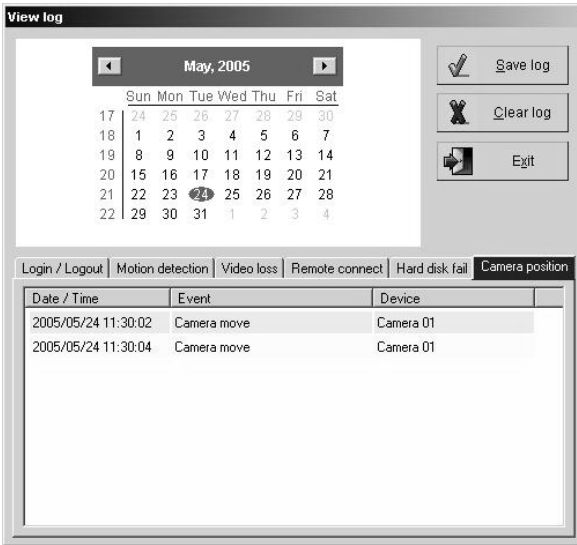



Smart search video: Click  to narrow the search the specific regions of recorded video.

The search engine is able to search for video that has been changed only at that spot,


so the video that is retrieved will show exactly when the object disappeared. The detail process as below:

- **Playback video clips from event table of View log directly:**




Clicking  on the tool bar of Main screen, will allow you to playback video clips from event tale of view directly.


Follow the steps below to smart search videos:

- Step 1.** Click  icon and you will see the above window.
- Step 2.** Select date from the time table on the top of window.
- Step 3.** Select the “**Motion detection**“ section and then the event table of Motion detection will be listed.
- Step 4.** Click the event from the highlight table which you want to playback video clip and then the video will be playback directly.

- **Smart search Video clips:**

Clicking  on the tool bar of playback, will allow you to smart search the video clips.

Follow the steps below to smart search videos:

Step 1. Click  icon and you will see **Fig 6-10-1** window.

Step 2. Click and drag down to the right with the left mouse key to form a highlighted tab to select the search area.

Step 3. Click the “Add area” button to add highlighted area. The area will change to a yellow mesh to mark a

protected detection area. If more than one area is desired, repeat **Step 1** and **Step 2**.

Step 4. Select “Sensitivity “, “Speed “and “ Range “ and then click “ Search “ icon to start the smart search function.

Step 5. You will see **Fig 6-10-2** window when you finish the “Smart search” function. The video of object disappeared will list on the right site, click these list video clips and the video will be playback.

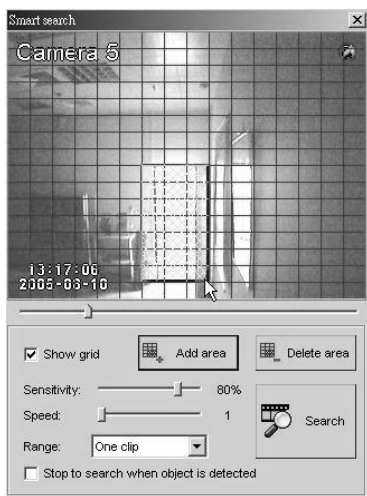


Fig 7-10-1



Fig 7-10-2

Sensitivity: The sensitivity is high will get the false picture of Smart search; if the sensitivity is too low that will

be loss the picture.

So please select optimum volume.

Speed: The number of speed is high the search speed will be faster and the number is low that search speed will be slower.

Range: Select ” **One video** “ or “ **All videos** “ for smart search.

Stop to search when object is detected: Enable this function, it will stop the search process when object is detected.



Fig A-1



Fig A-1

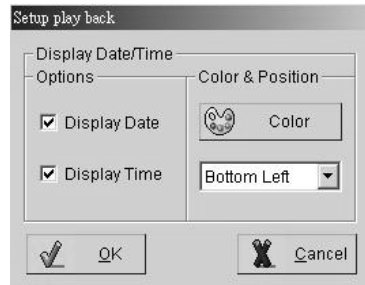



Fig A-2



1. If you playback on Local Server, as shown on Fig.A-2, please click  then you could select if showing date/time/location or not (refer Fig A-3).
2. The date/time/watermark won't be shown when user playback video clip by playback tool, for example Media Player.

7-11. Playing back across Local Area Network (LAN)


This chapter will show you how to use EZLANPlayback program to play back video files across the network (LAN).

It provides a fast playing back the video clips of Web Surveillance Server in any PC through LAN. Before you start, make




sure the DVR's file folder (ClipPro folder, for example) is shared to network users, done through proper setups in Windows


Sharing and Security, please refer to **Chapter 4-4**. After the folder and files are shared available, follow these steps to

playback video clips of Web Surveillance Server via LAN user.

Step 1. By clicking on the  button from main screen to play the LANPlayback program. You will see the picture as below.

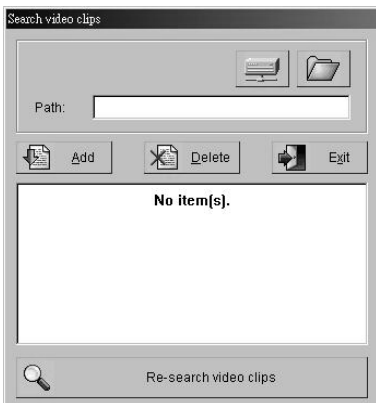


Step 2. Click  icon and below picture will be shown. Click the  or  to select the folder and then

click “Add” button to setup the path of playback. Repeat and add one more path. Click  icon and you can setup

the Web Surveillance Server's HDD become a part of HDD of remote client PC automatically when you turn on the DVR.

It does not need to setup the link path again when you would like to have the LAN playback function.



Step 3. Click on “**Re-search video clips**” button to complete the setting.

Step 4. After above setting, you can playback the video clips of Web Surveillance Server via LAN.

The detail process of playback video clips, please refer Chapter 7-10




Enable “Use default” icon that you can playback video file without open

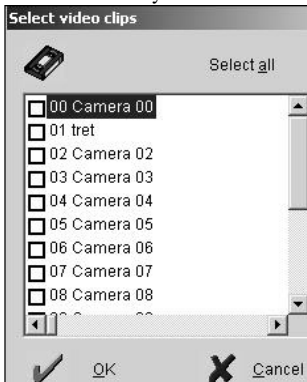
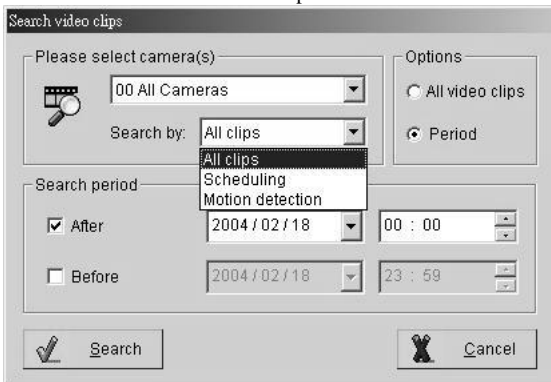
Web Surveillance Server program, but you cannot playback video clips on remote PC via LAN.

7-19. Back up the video clips

This chapter will show how to back up video clips to another storage device from your saved database.

- Follow the steps below to back up videos




1. Click  in the top of left side to **search** for videos in database. And you will see below window.

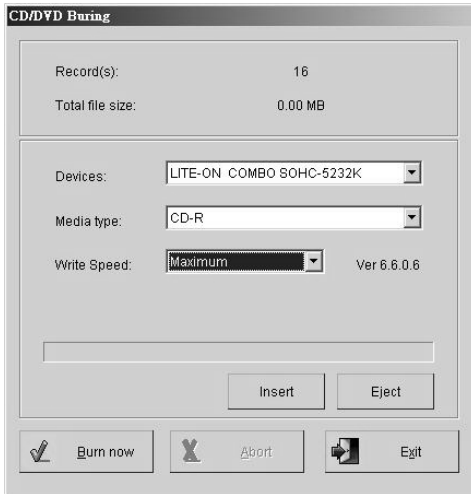


2. Select the camera. To play multiple videos, select “00 Camera 00”.
3. Decide which recording way will be searched by “Options”.
4. Select the recording period time and date. Click **search** to find the clips among the selected time.
5. And you will see below window.


The screenshot shows the EzBackup application window. The title bar reads 'EzBackup' and the menu bar includes 'Back up', 'View', 'Help', and 'Exit'. Below the menu bar is a toolbar with several icons: a magnifying glass, a folder with a checkmark, a folder with a plus sign, a folder with a minus sign, a CD/DVD icon, a globe, and a folder with a right-pointing arrow. The main area contains a table with the following columns: 'Camera', 'Recording time', 'CD Burning', 'File size', and 'File name'. The table lists 15 video files from '01 Camera 01' recorded on 2004/10/27. The first six rows have a checked checkbox in the 'CD Burning' column, while the remaining nine rows have an unchecked checkbox. The file names are all in AVI format.

Camera	Recording time	CD Burning	File size	File name
<input checked="" type="checkbox"/>	01 Camera 01 2004/10/27 11:58 - 12:03	<input checked="" type="checkbox"/>	79.77 M	0120041027115840P,Avi
<input checked="" type="checkbox"/>	01 Camera 01 2004/10/27 12:03 - 12:08	<input checked="" type="checkbox"/>	76.69 M	0120041027120342P,Avi
<input checked="" type="checkbox"/>	01 Camera 01 2004/10/27 12:08 - 12:13	<input checked="" type="checkbox"/>	77.85 M	0120041027120844P,Avi
<input checked="" type="checkbox"/>	01 Camera 01 2004/10/27 12:13 - 12:18	<input checked="" type="checkbox"/>	81.21 M	0120041027121346P,Avi
<input checked="" type="checkbox"/>	01 Camera 01 2004/10/27 12:18 - 12:23	<input checked="" type="checkbox"/>	81.79 M	0120041027121848P,Avi
<input checked="" type="checkbox"/>	01 Camera 01 2004/10/27 12:23 - 12:28	<input checked="" type="checkbox"/>	82.09 M	0120041027122350P,Avi
<input type="checkbox"/>	01 Camera 01 2004/10/27 12:28 - 12:33	<input type="checkbox"/>	82.38 M	0120041027122851P,Avi
<input type="checkbox"/>	01 Camera 01 2004/10/27 12:33 - 12:38	<input type="checkbox"/>	82.37 M	0120041027123353P,Avi
<input type="checkbox"/>	01 Camera 01 2004/10/27 12:38 - 12:43	<input type="checkbox"/>	82.58 M	0120041027123855P,Avi
<input type="checkbox"/>	01 Camera 01 2004/10/27 12:43 - 12:49	<input type="checkbox"/>	82.48 M	0120041027124357P,Avi
<input type="checkbox"/>	01 Camera 01 2004/10/27 12:48 - 12:54	<input type="checkbox"/>	82.99 M	0120041027124859P,Avi
<input type="checkbox"/>	01 Camera 01 2004/10/27 12:54 - 12:59	<input type="checkbox"/>	83.45 M	0120041027125401P,Avi
<input type="checkbox"/>	01 Camera 01 2004/10/27 12:59 - 13:04	<input type="checkbox"/>	82.63 M	0120041027125903P,Avi
<input type="checkbox"/>	01 Camera 01 2004/10/27 13:04 - 13:04	<input type="checkbox"/>	39.88 M	0120041027130405P,Avi
<input type="checkbox"/>	01 Camera 01 2004/10/27 13:08 - 13:08	<input type="checkbox"/>	0.45 M	0120041027130838P,Avi

6. Select video file, which you would like to have by manual. Or you also can click  to select /remove selection all video file.
7. Click  to back up video clips to another HDD drive. Or you also can click  icon and you will see below window to back the video clips into CD-RW/DVD+-RW. Click the “**Burn Now**” button for start backup video files.



These backup video clips can be searched by I-View's EZPlayback program.

8. Click  to complete backup.

● Video tool bar on backup screen



Search – Click this icon to search video files.



Select – Click this icon to select/remove all video clips to back up video clips.



Create backup shortcut – Click this icon to paste the video clips which has been selected to the other storage devices; such as CD-RW/DVD+-RW or HDD.



Back up video clips – Click this icon to back up video clips to Hard Disk.



CD Burning – Click this icon to back up video clips CD-RW or DVD+-RW.



About - Press to see the program version.



Exit –Exit the video backup setting window.

On Remote PC site

Step 1. Once you have finished installing the FreeView Pro software, you may access them by clicking on the “**Start**”

button, the “**Programs**” folder, then “**FreeView Pro**” and then clicking on the “**Two way communication – EZCTalk**” icon.

And you will see Fig 7-21.2 window.

Step 2. Enter the “**IP address**” or “**ID Code**” and “**Password**” which DVR site you wants communication.

Step 3. The number of “**TCP/IP Port**” must be matched between FreeView Pro and Web Surveillance Server. Web Surveillance Server default is 1701

Step 4. Choose the “**Audio sample rate**”. Choosing a **16K** audio rate will give a better audio quality, but also take up more bandwidth. Oppositely, choosing a **8K** rate will give a worse quality and less bandwidth.

Step 5. Now, choose option from the “**Communication**” menu. “**Talk**” will allow you to have two way audio

communication with DVR site, and “**Listen**” will allow you to hear the voice from DVR site.

Step 6. Adjust the audio volume of Listen and **Talk** to suit your request, if it is necessary.

Step 7. Press the “**Connect**” button to complete the process. FreeView Pro will connect you to the DVR site for audio communication.

8. Remote Client Software Installation

8-1. System Requirement for Remote client software

- Desktop or Notebook PC with Pentium III 500 MHz CPU or better.
- Operating system: Windows 98 Second Edition, ME, 2000 or XP.
- 128 MB free hard drive space minimum.
- Sound card and speakers are required for sound alarm/effects.
- 24-bit (true-color) VGA card or better.
- Modem speed 33.6K or better.



1. FreeView Pro is only for TCP/IP remote viewing.
2. AnyView Pro is only for modem-to-modem remote viewing.
3. PDAView is only for Pocket PC PDA remote viewing.

8-2. FreeView Pro Installation (Remote Client PC — TCP/IP viewer)

This chapter walks you through the installation and setup process for Remote client software.

The enclosed CD includes “FreeView Pro” (TCP/IP), “AnyView Pro” (Modem to modem), “PDAView Pro” (Pocket PC PDA viewing).

(Also updated files are available on our website)

Follow these steps to install **FreeView Pro Software**.

1.Click “FreeView Pro Software”, as **Fig 8-2.1**.

2.Select language, which you would like to installation, as **Fig 8-2.3**

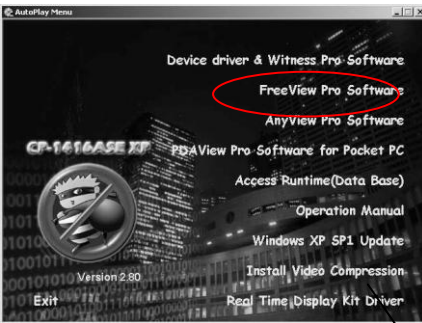


Fig 8-2.1



Fig 8-2.2

3.Click “Next” to continue installation, as **Fig 8-2.3**.

4.Click “Browse” to change the destination or “Next” to continue, as **Fig 8-2.4**

5.Click “Finish” to complete installation.

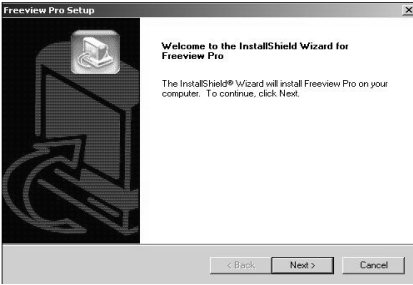


Fig 8-2.3

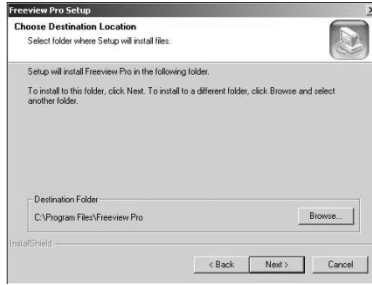


Fig 8-2.4

8-3. AnyView Pro Installation (Remote Client PC --- Modem to modem)

Follow these steps to install AnyView Pro Software.

1. Click “AnyView Pro Software”, as Fig 8-3.1.
2. Follow Chap. 8-2 to complete installation.

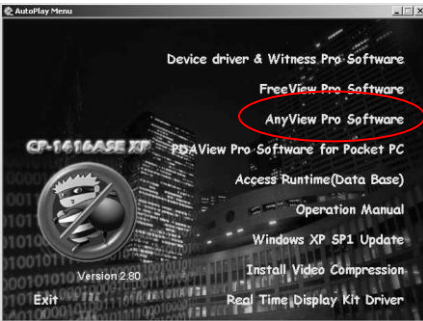


Fig 8-3.1

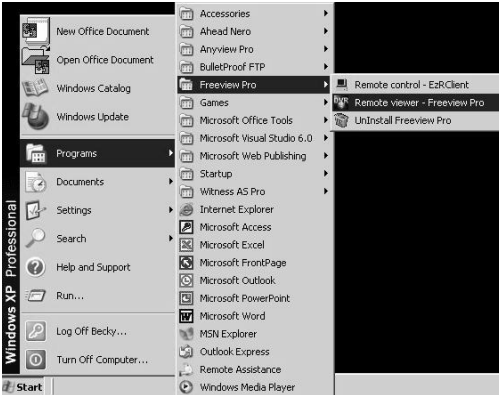
9. Using FreeView Pro (For TCP/IP viewers)

These sections discuss FreeView Pro and how to use it. The main purpose of FreeView Pro is to provide a way to connect to the Local DVR Server (where you are running DigiCap PRO/XP) to monitor the cameras there if you happen to be far away from it. With FreeView Pro you can begin to use automatic remote video security and surveillance via the Internet.

9-1. General Information

Once you have finished installing the software, two icons will be created for you.

You may access them by clicking on the “**Start**” button, the “**Programs**” folder, then “**FreeView Pro**” and then clicking on the “**Remote Viewer – FreeView Pro**” icon. The following icons are available:



- **Remote Viewer - FreeView Pro:** FreeView Pro enables you to remotely patrol your place
- from any place at any time as long as you have the access to an Internet.
- **Uninstall FreeView Pro:** Removes FreeView Pro from your computer.
- **Two way Communication- EzCTalk** – Real-time audio and video from designated locations are simultaneously transmitted to both the control center and designated DVR sites.

Please refer **chapter 7-21**.

Remote Control- EZRCClient: Allows the Remote client to set up the

Web Surveillance Server PC from remote site such as operating at the local. The detail setting please refer

Chapter 9-9.

9-2. The FreeView Pro Tool Menu Bar



Many of the functions in FreeView Pro behave similarly or even identically to those of Web Surveillance


Server software.

The tool menu bar enables you to easily use TCP/IP to connect to the Local DVR Server via Internet or Intranet,

control the video channels of the Local DVR Server, display Local DVR Server video channels, save video files,

and configure exactly how you want the program to work.

Before you can do anything, you must login. You cannot access any of the functions in FreeView Pro without logging-in.

Begin by pressing  in the upper right corner and you should see the window below. The initial, factory

default username is

“root”, and the initial password is “123”. You should change the password as soon as possible after your first login.

After you login, you can explore the system through the following buttons.



Connect to local site: Use this to set up a connection to the Local DVR Server.



Set up site book: The site book allows you to easily keep track of the sites you connect to.

Rather than entering the same information every time you connect to a site, you can store it in the site book.



Play back video clips: This would allow user to search video clips by site name and play back one or more video files of remote client PC from saved database.



System configuration: Press this to set system configuration. Please see chapter 9-6.



Set up privileges: Use for setting user privileges. It is very similar to that of Web Surveillance Server in Chap 7-9.



View log: Press this to see the log-in/logout record and alert table.



Storage device configuration: To configure storage settings. It is very similar to the one in Chap. 6-3.



Remote Control: Allows the remote client to set up the Web Surveillance ServerPC from remote site such as operating at the local. The detail setting please refer Chapter 7-9.



Stop sound alarm: Press this to turn off an alarm (such as a detection alarm) after it sounds.



Listen: It will allow remote user listen to the local site DVR.




About: Press to see the program version.

9-3. Connecting to Local DVR Server by FreeView Pro

This chapter shows you how to connect to Local DVR Server.

- **Make a IP address or ID code connection via Internet**

1. Connect to the Internet or Intranet with your computer first.

2. Click  on the bottom **Tool bar** and you should see below window.

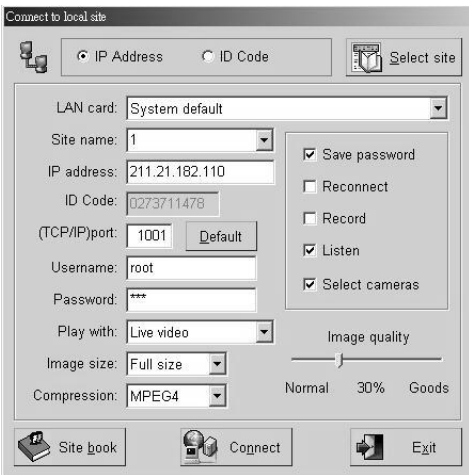


Fig 9-3.1

3. Connecting to the Local DVR Server via Internet:

Local DVR Server has a fix IP

3-1. Enable “**IP address**” at the top of the window.

3-2. Enter the “**IP address**” (IP address or DNS)


3-3. Enter the site name that you wish to connect to in the “**Local site**” box. Its name is up to you.

Local DVR Server has a dynamic IP

3-1. Enable “**ID Code**” at the top of the window.

3-2. Enter the “**ID Code**”. Your vendor could provide the ID code.

3-3. Enter the site name that you wish to connect to in the “**Local site**” box. Its name is up to you.

4. Select LAN card, if you have installed more than one.
5. The number of “**TCP/IP Port**” must be matched between FreeView Pro and Web Surveillance Server.
Web Surveillance Server default is 1001 Now, choose an option from the “**Play with**” menu.
“**Live video**” plays the camera.
6. Which is currently viewing, “**Remote Playback**” will allow you to play back video clips that had been recorded on Local DVR, and “**Remote download**” will allow you to download video clips that had been recorded on Local DVR.
7. Enter your “**Username**” and “**Password**”. The administrator of Local DVR Server must create a specified user account in Local DVR Server before you connect.
Without the correct username and password, you cannot log in.
8. Choose a “**Wavelet**” or “**MPEG 4**” as **Compression** method for transmitting video.
9. Choose an “**Image quality**”. Like other quality selectors, choosing a higher quality will give a better image, but also take up more space and take longer to transmit.
10. Choose an “**Image size**”. Choosing a **Full size** will give a better image, but also take up more space and take longer to transmit. Oppositely, choosing a **Half size** will give a worse quality and faster transmission speed.
11. Press the “**Connect**” button to complete the process. FreeView Pro will connect you to the Local DVR Server.
12. “**Site book**” allows you to set up site information if you have more than one Local DVR Server wants to connect. Click “**Site book**” in the bottom corner of window (you can also use “**Set up site book**” on the bottom tool bar) and enter the same information as you enter above, then click “**Add**” to save it.
You can click the “**Select site**” icon in the upper right and decide which site you want to connect with.
13. Repeat **step 1-11** you can also connect more than one Local DVR Server and choose which one you want to **Play with**. (**Live video**, **Remote Playback** and **Remote download**)
14. Click  near the top enter of your FreeView Pro window to disconnect when you finish communicating with the local DVR site. “**Save Password**”, “**Reconnect**”, “**Record**”, “**Listen**” and “**Select cameras**” are options on the right side of the window.

Save Password if you want this user's password to be saved. This means that later when you enter this same username, the password will automatically be recalled.

Reconnect If you want FreeView Pro to automatically reconnect after the connection is broken.


Record It will record videos of the Local DVR Server on remote client computer automatically when the video is connected.

Listen It will allow remote user listen to the local site.

Select camera It will allow remote user to select, which camera(s) want to remote view.

If you enable this function, it will show the available camera(s) for your selection before you connect to the Local DVR Server.




- **Concurrently monitor multiple Local DVR Servers**

When user wants to monitor multiple Local DVR Servers at the same time, at first, user should connect all Local DVR Servers he wants to monitor. Click any place on the screen then press  or **ESC** key of keyboard.

Below window will be seen. The videos came from multiple Local DVR Servers will be combined and displayed on the screen.






User could decide to how many videos are split by select **“Splitter:”** (maximum is 36).



Click  or  to rotate camera views on screen manually. Press  or **ESC** key of Keyboard again to return to tool bar mode.





9-4. Video Window Function Description

The right toolbar contains many useful buttons. Here is an explanation of what they do.



- Click  to modify system time.
- Click  to view just one camera's image. Double-clicking a screen when viewing multiple windows can do this function too. Double-click again to go back to multiple modes.
- Click  to divide the window into 4/9/16/25 split screens.
- Click  to divide the window into 6/8/13/22 split screens.
- Click  to rotate cameras views on screen automatically. Click again and the rotation will stop.

Note that this differs from Web Surveillance Server's camera rotation. For example, if you have 2 cameras at site A, and 4 cameras at site B.

FreeView Pro will rotate to site A, showing the 2 cameras of A, then to B, only showing the 4 cameras of B. The rotate time is up to user.

- Click  or  to rotate camera views onscreen manually.
- Click  ...  to start or stop recording. **Red** means recording, **blue** means waiting and view mode is **black**.

You can instantly start recording on a camera by toggling this button to red if that camera did not set any recording schedule.

- Click  to disconnect with the Local DVR Server.
- Click  To listen to the available camera(s) of the Local DVR Server.

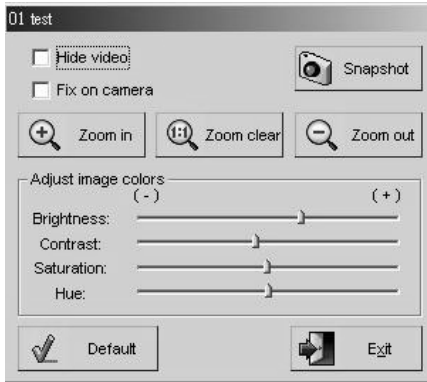


If you would like to stop to listen the audio; click "**Stop Listen**" tab.

- **P/T/Z (optional)** PTZ camera or Speed Dome Camera on Local DVR Server is authorized to be played on remote site, remote client can operate Speed Dome/PTZ Camera when connect successfully. Please refer to

Chapter 6-3

- When viewing camera(s) of Local DVR Server, you can right click on the screen to bring up more options, as below:



Hide video This button blanks the portion of the screen devoted to this camera.

Fix on camera This button freezes motion on all other cameras, while this camera will continue to play.



This button takes a snapshot of the video image as a photograph. A new window will pop up, where you can choose to save this image to disk or choose to print it out.

Adjust Image Colors Right click on the video screen, and you will be able to adjust brightness, contrast, saturation and hue.



This function is designed to zoom in (amplify) the video display image. After you have screen zoomed in, you can navigate the viewing area by holding down the left mouse key on the screen.





This function is designed to zoom out (shrink) the display image. The video image zooms out at each click of the icon.

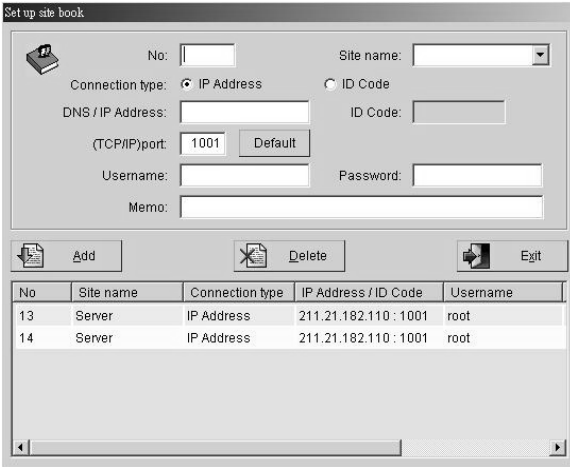


This function is designed to return the image to its original and default magnification.

9-5. Using the Site Book

The site book will conveniently remember all the necessary information about a site that you wish to connect to so you will not have to type it all over again every time you connect.

Begin by clicking  in the tool bar or in the lower right corner of the  menu. You will see the window below.




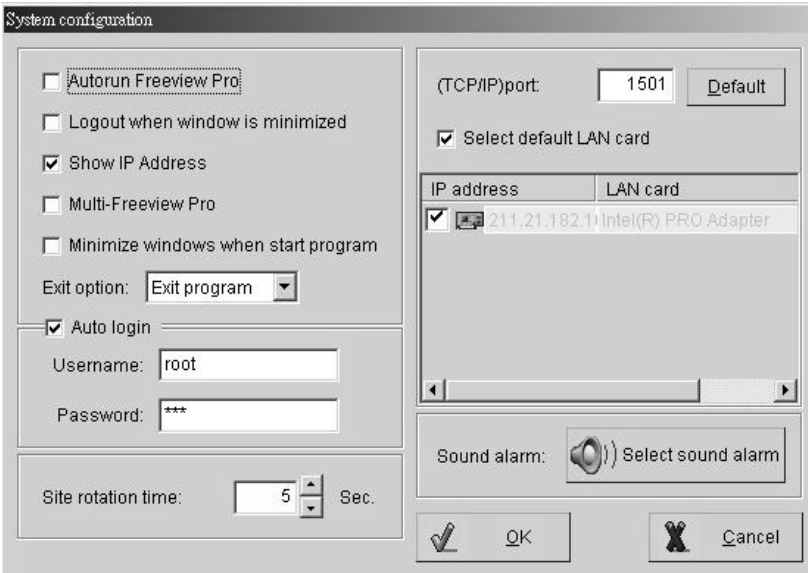
No	Site name	Connection type	IP Address / ID Code	Username
13	Server	IP Address	211.21.182.110 : 1001	root
14	Server	IP Address	211.21.182.110 : 1001	root

Please follow steps as below to set up site book.

1. Fill in a “**No**”. If you fill in a “**No**” that is not taken, you will be able to. The numbers you choose do not matter, as long as they are not already being used – the numbers are only for distinction.
2. Note that if you ever add an entry with the same number as an existing one in the book, **the original will be deleted**.
3. Fill in “**Site name**” or select the available Local DVR Server in the pull-down menu.
4. Click **ID code** or **IP address** for “**Connection type**” and fill ID code or IP address/DNS, respectively.
5. Fill in “**Port**”. The number of “**Port**” must be matched between FreeView Pro and Web Surveillance Server software. **Web Surveillance Server default is 1001**.
6. Fill in “**Username**” and “**Password**”. The administrator of Local DVR Server must create a specified user account in Local DVR Server before you set up site book.
7. Press “**Add**” button to finish a site book set up.

9-6. System Configuration

Click  and you will see the window below



System configuration

Autorun Freeview Pro

Logout when window is minimized

Show IP Address

Multi-Freeview Pro

Minimize windows when start program

Exit option:

Auto login

Username:


Password:

Site rotation time: Sec.

(TCP/IP)port:

Select default LAN card

IP address	LAN card
<input checked="" type="checkbox"/> 211.21.182.1	Intel(R) PRO Adapter

Sound alarm: 

Auto run FreeView Pro automatically starts FreeView Pro whenever your PC starts Windows.

Logout when window is minimized automatically logs out the current user whenever the minimize button is pressed.

Show DNS/IP address Enable this function, you will be able to see real DNS/IP address instead of “*****”.

Multi FreeView Pro Enable this function, the PC will be allowed to run multi FreeView Pro program on a PC.

Minimize windows when start program automatically minimize the FreeView Pro’s window whenever the FreeView Pro program is started.

Exit option To select PC status after exiting **Web Surveillance Server** program. Press the arrow buttons to switch among

“**Exit program**”, “**Turn off**”, “**Log off**” or “**Restart**”. **Ex.** Select “**Turn off**”, the Windows OS will automatically

shutdown after exiting Web Surveillance Server program.

Auto login Enable this function will automatically login by user name and password saved in the system.

TCP/IP port Enter the port of Web Surveillance Server, which you would like to automatically send the live video to remote client PC

with the FreeView Pro when camera is triggered. The number of “**Port**” must be matched between FreeView Pro and Web Surveillance Server software.

FreeView Pro default is 1501.

Select default LAN card It will speed transmission while FreeView Pro PC installs more than one LAN card. Enable this function, the system will execute the default setting of LAN card.

Select sound alarm FreeView Pro will notify the event via the setting alarm sound directly when the camera is triggered and video loss of Web Surveillance local server. You can record alarm sound file by yourself.



Site rotation time You can set the rotation time for each site.

9-7. Playing Back Video Clips

FreeView Pro can play both videos stored on your remote client computer and on the Local DVR Server.

You can specify your search parameters, as below.

Search for recording video files on the remote client computer

1. Click  on the tool bar, and click  in the middle of right side to search the video clips saved on remote client computer (the computer which installs software FreeView Pro).

You should see the window below **Fig 9-7.1**.

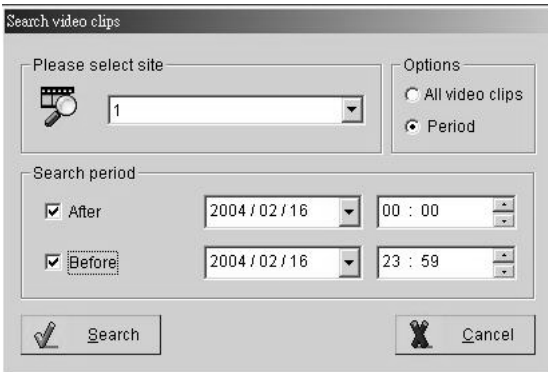


Fig 9-7.1




Fig 9-7.2

2. Select the site that you wish to search for videos of DVR site.
3. Enter a date and time into **After Date**, **Before Date** or both.
4. Click the **Search** button. All videos stored on the specified site during the specified period will be listed as **Fig 9-7.1**.

Click the cameras you wish to display and click “**Ok**”. The videos will play concurrently.

Remote playback video files on one Local DVR Server

1. Click  on the tool bar; enter the **site name** and **IP address or ID code** of Local DVR Servers where the video clips you want to play back stored on. Select “**Remote Playback**” on “**Play with**” box as **Fig 9-3.1**, then click “**Connect**”. And you will see the **Fig 9-7.1**.
2. Decide which recording way will be searched by “**Options**”.
3. Enter a date and time into **After**, **Before** or both.

4. Click the **Search** button. All files during the specified period will be listed. Click the cameras you wish to display and click **“Ok”**. The videos will play concurrently.

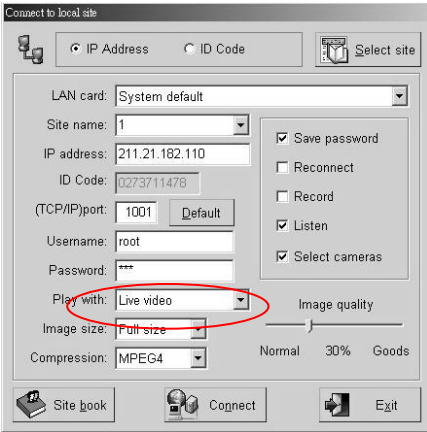


Fig. 7-3

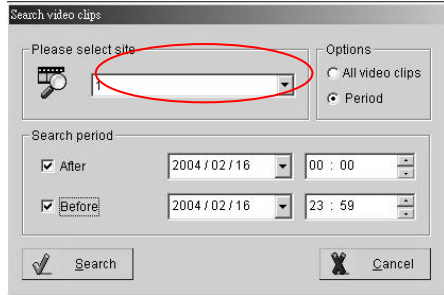



Fig. 7-4

Remote playback video files on multiple Local DVR Servers

Please connect to all Local DVR Server on the sites you want to play back and please make sure you already select **Remote playback** on the **Play with** box.


Then you could play back videos in multiple sites concurrently. For **Splitter** function, please refer **“Concurrently monitor multiple Local DVR Servers”** of Chap. 9-3.

Specify one site or cameras to Playback from multiple connections

From **Site name** box, select a site you want to play back. You also could specify the cameras in one site by click .



Disconnect one site from connections

Click  to disconnect with the site you select from **Site name** box.


Remote playback tool bar When viewing camera(s) of Local DVR Server, you can right click of mouse on the video of screen to bring up more options, as below. For detail functions please refer **Chapter 7-10**.

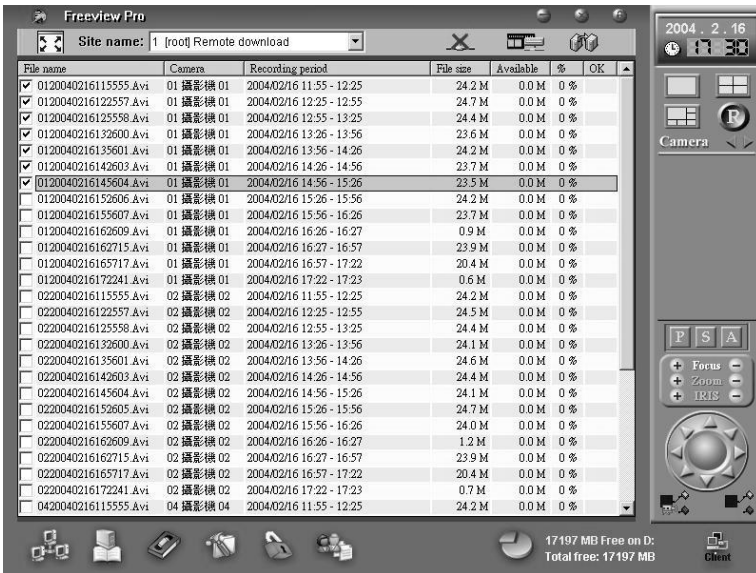



9-8. Remote download video clips

You can easily download video clips of Web Surveillance Server on remote client computer via FreeView Pro. Please specify your search parameters of download, as below.




1. Click  on the tool bar; enter the **Local site** and **IP address** or **ID code** of Local
2. Video Servers where the video clips you want to download stored on. Select “**Remote download**” on “**Play with**” box as **Fig 9-3.1**, then click “**Connect**”.
3. Decide which recording way will be searched by “**Options**”.
4. Enter a date and time into **After**, **Before** or both.
5. Click **Search** button. All files during the specified period will be listed. Click the cameras you wish to download and click “**Ok**”. The select video clips will be listed concurrently. (As below picture)



6. Select the video file which you want to download.
7. Click icon  on the top right, start or stop to download the video clips.

Disconnect one site from connections

Click  to disconnect with the site you select from **Site name** box.

11. Using PDAView Pro (For Pocket PC PDA only)

PDAView Pro is a remote view application for Pocket PC device. It can run on PDA using Pocket PC 2002 or 2003 operating system.

These sections discuss PDAView Pro and how to use it. The main purpose of PDAView Pro is to provide a way to connect to the Local DVR Server (where you are running DigiCap PRO/XP) to monitor the cameras there if you happen to be far away from it.

With PDA you can begin to use automatic remote video security and surveillance via the Wireless LAN or Internet.

11-1. The PDAView Installation

You may install the PDAView Pro program into the PDA by following the steps below:

1. Plug your PDA via USB or Com port to a PC installed with Microsoft ActiveSync.
2. Run Microsoft ActiveSync in the connected PC and make sure both the PDA and PC are synchronized.
3. Insert our CD into the CD-ROM drive of the PC and run “Instal.exe“ in the CD-ROM root directory.
4. In the setup dialog box select “**PDAView Pro**” and click **Next**.
5. Click **Browser** if you wish to specify another destination directory; otherwise click
6. **Next** and follow the rest of the instruction to complete the installation.

1-2. The PDAView Pro Tool Menu Bar

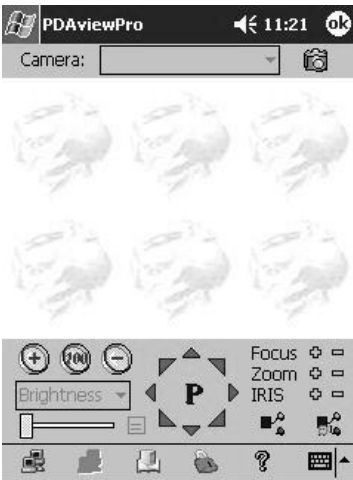


Fig 11-2.1

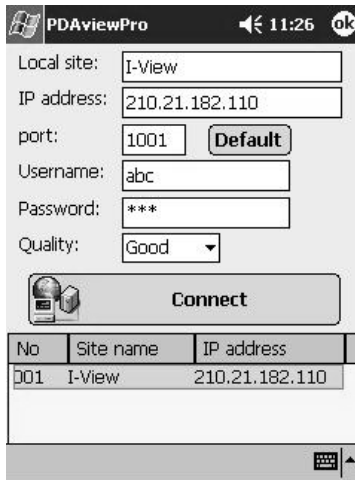


Fig 11-2.2

The tool menu bar (Please refer Fig 11-2.1) enables you to easily use TCP/IP to connect to the Local DVR via Wireless LAN or Intranet, control the video channels of the Local DVR Server, display Local DVR Server video channels, save video files, and configure exactly how you want the program to work.





Many of the functions in PDAView Pro behave similarly or even identically to those of Web Surveillance Server and FreeView Pro.

11-3. Connecting PDAView Pro to Web Surveillance Server site

This chapter shows you how to connect to Local DVR Server via wireless LAN or Internet.

Once PDAView Pro is installed into your PDA device, you will be able to use it to monitor Web Surveillance Server video.

1. Load the PDAView Pro from the CD-ROM. (Please refer to 11-2.1)
2. Click the PDAView Pro icon in your PDA to start the application.
3. Click  on the bottom **Tool bar** and you should see the following Fig 11-2.2.
4. Enter the **“IP Address”**, **“User name”** and **“Password”**.
5. The number of **“Port”** must be matched between PDAView Pro and Web Surveillance Server software.
6. Choose an **“Image quality”**.
7. Press the **“Connect”** button to complete the process. PDAView Pro will connect you to the Web Surveillance Server DVR. (Please refer to Fig 11-2.3)
8. Press the **“Camera”** button to select which camera you want to remote view.
9. Click  on the bottom **Tool bar** to disconnect when you finish communicating with the local site.

11-4. Using the Site Book



Using the Site Book Tool Menu Bar in PDAView Pro behaves identically to those of FreeView Pro.

Please refer to Chapter 9-5.

